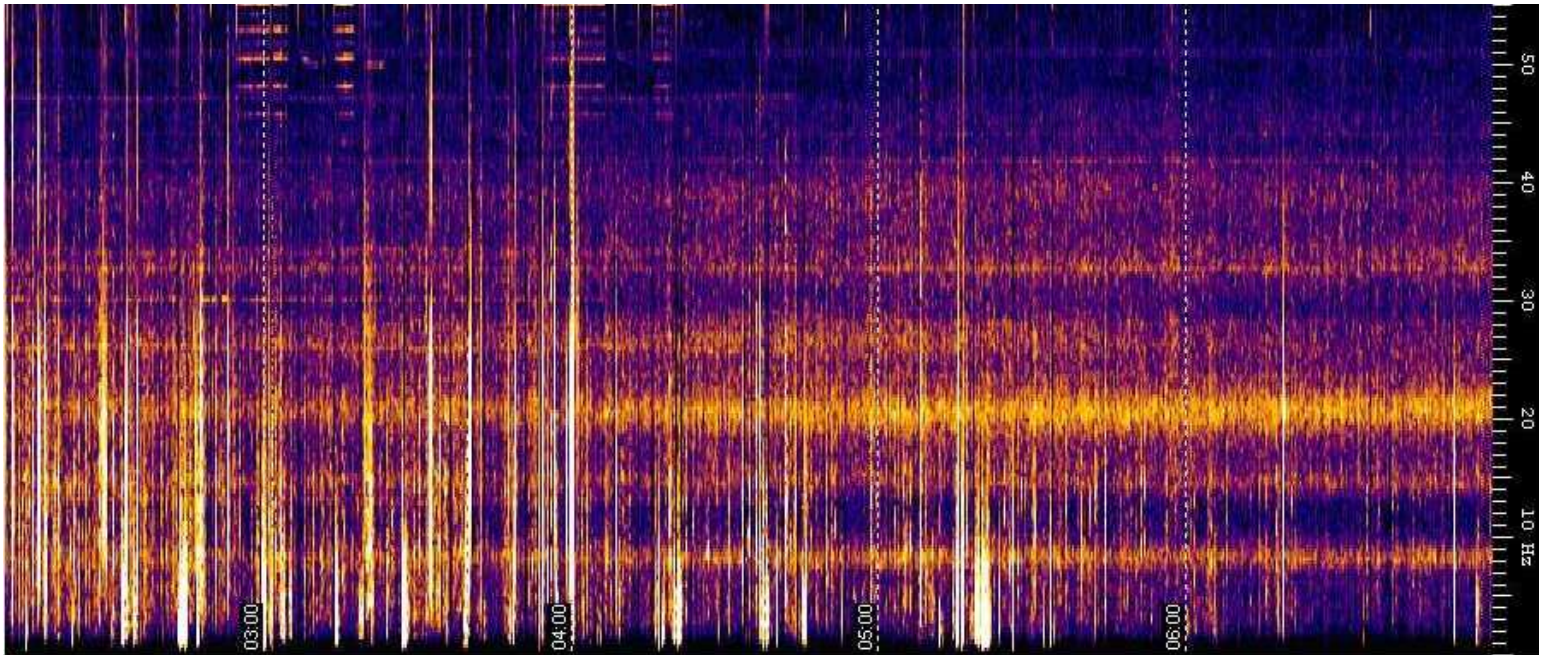
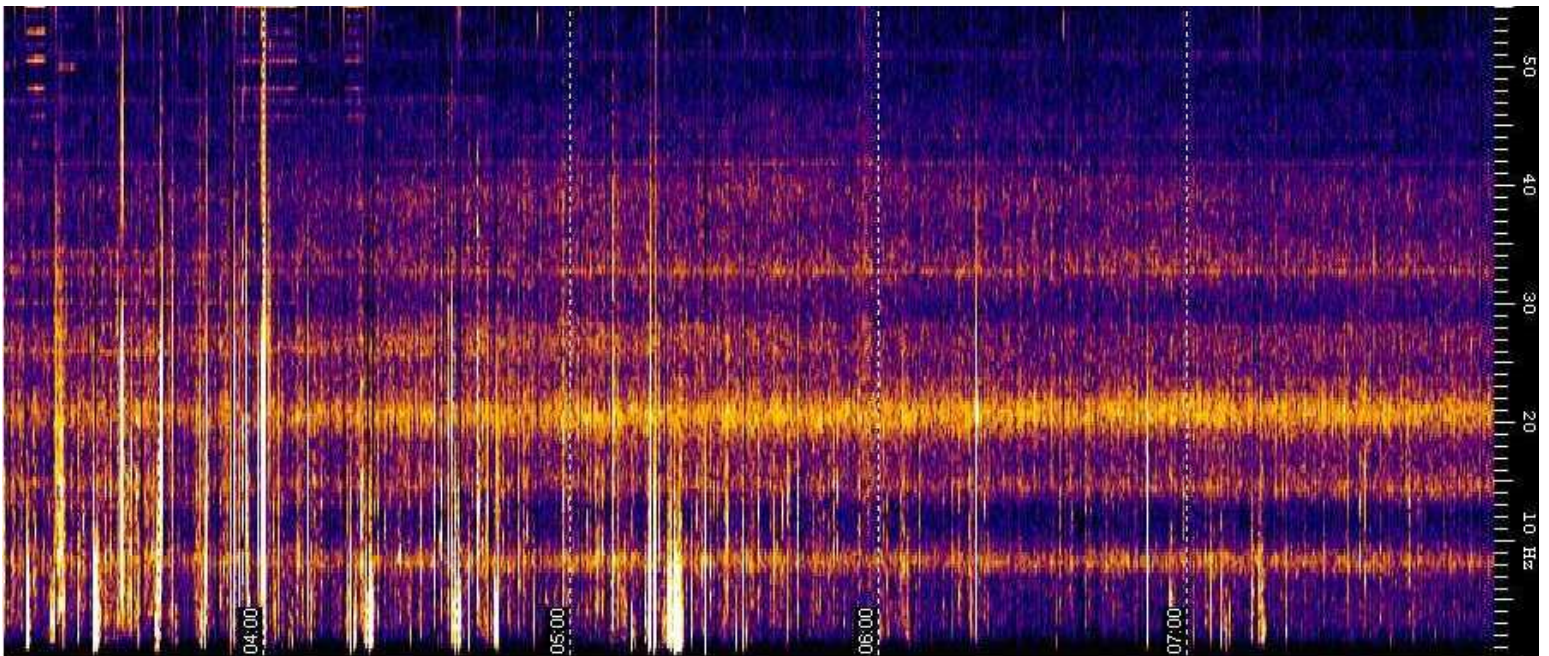


Anomaly Of Third Schumann Mode November 25th. 2008

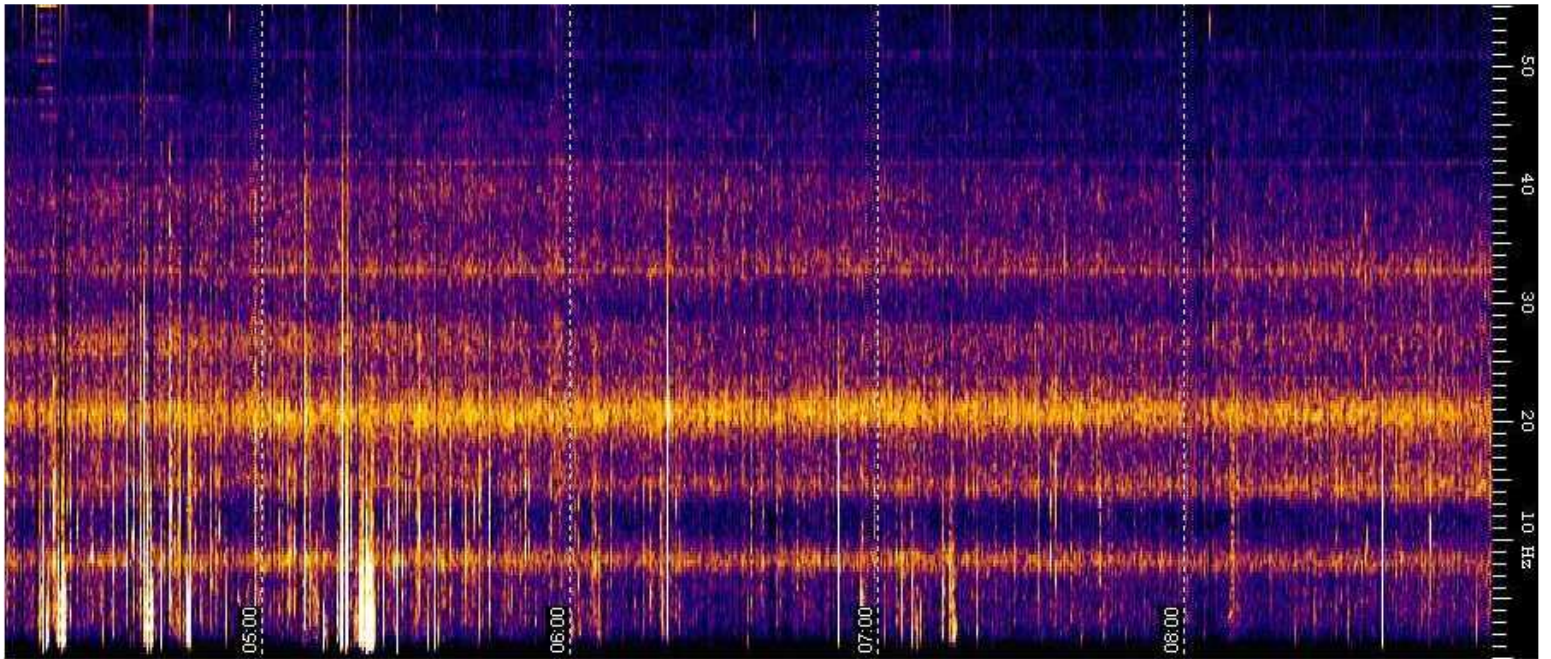
11/25/2008 Time Period 02:00UTC To 07:00UTC



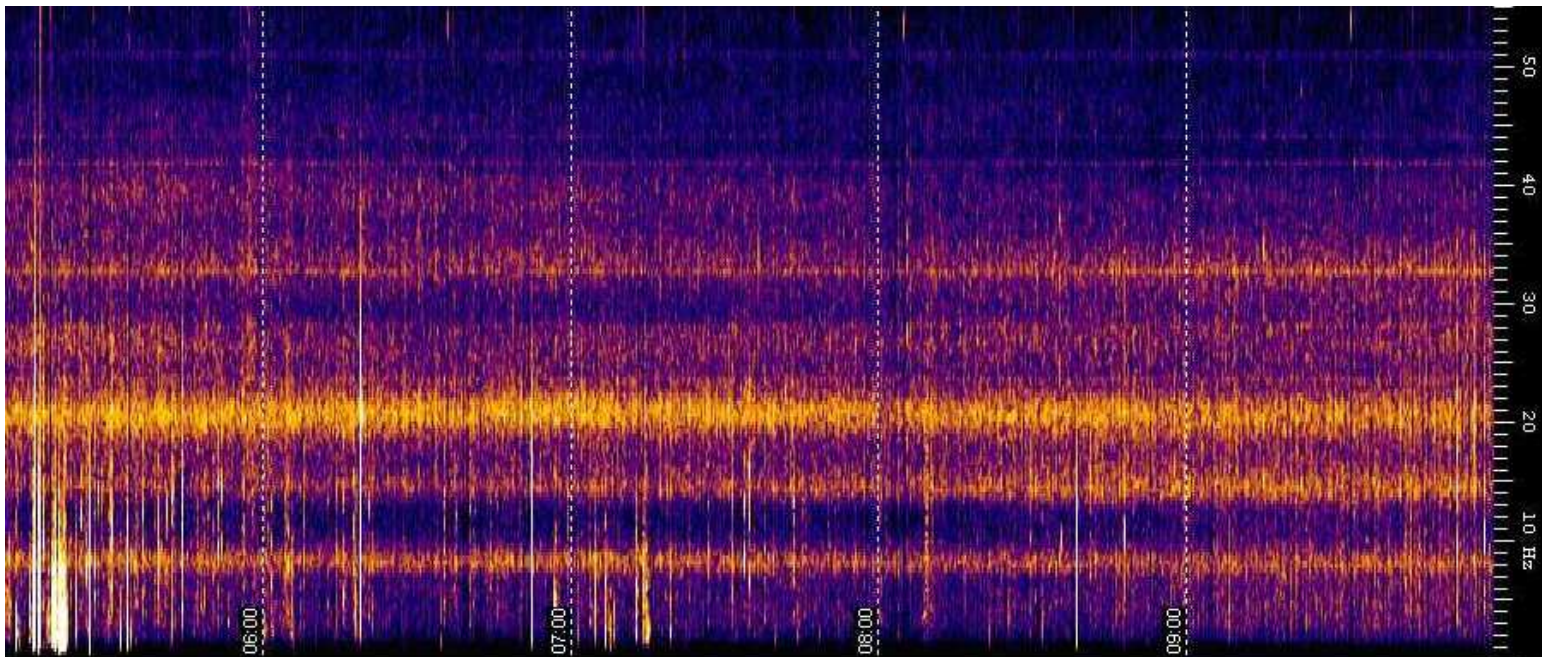
11/25/2008 Time Period 03:00UTC To 08:00UTC



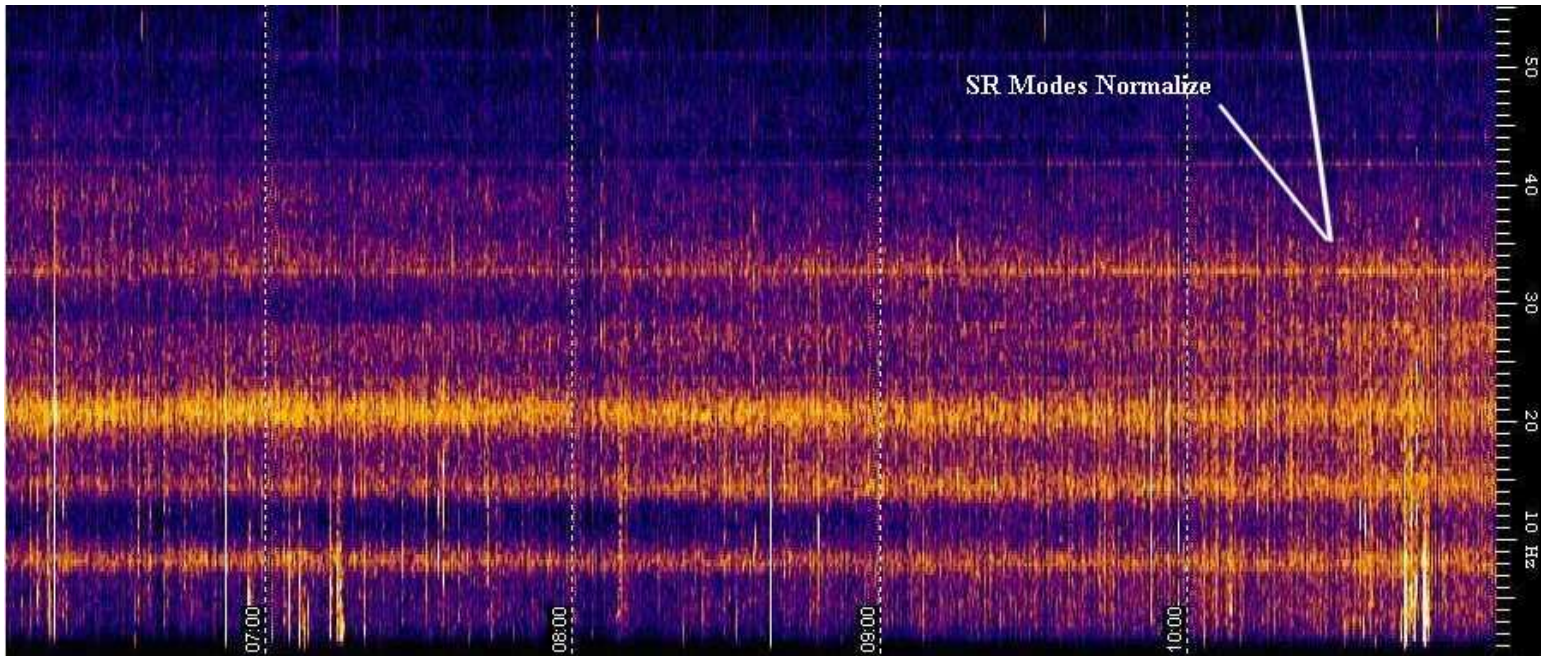
11/28/2008 Time Period: 04:00UTC To 09:00UTC



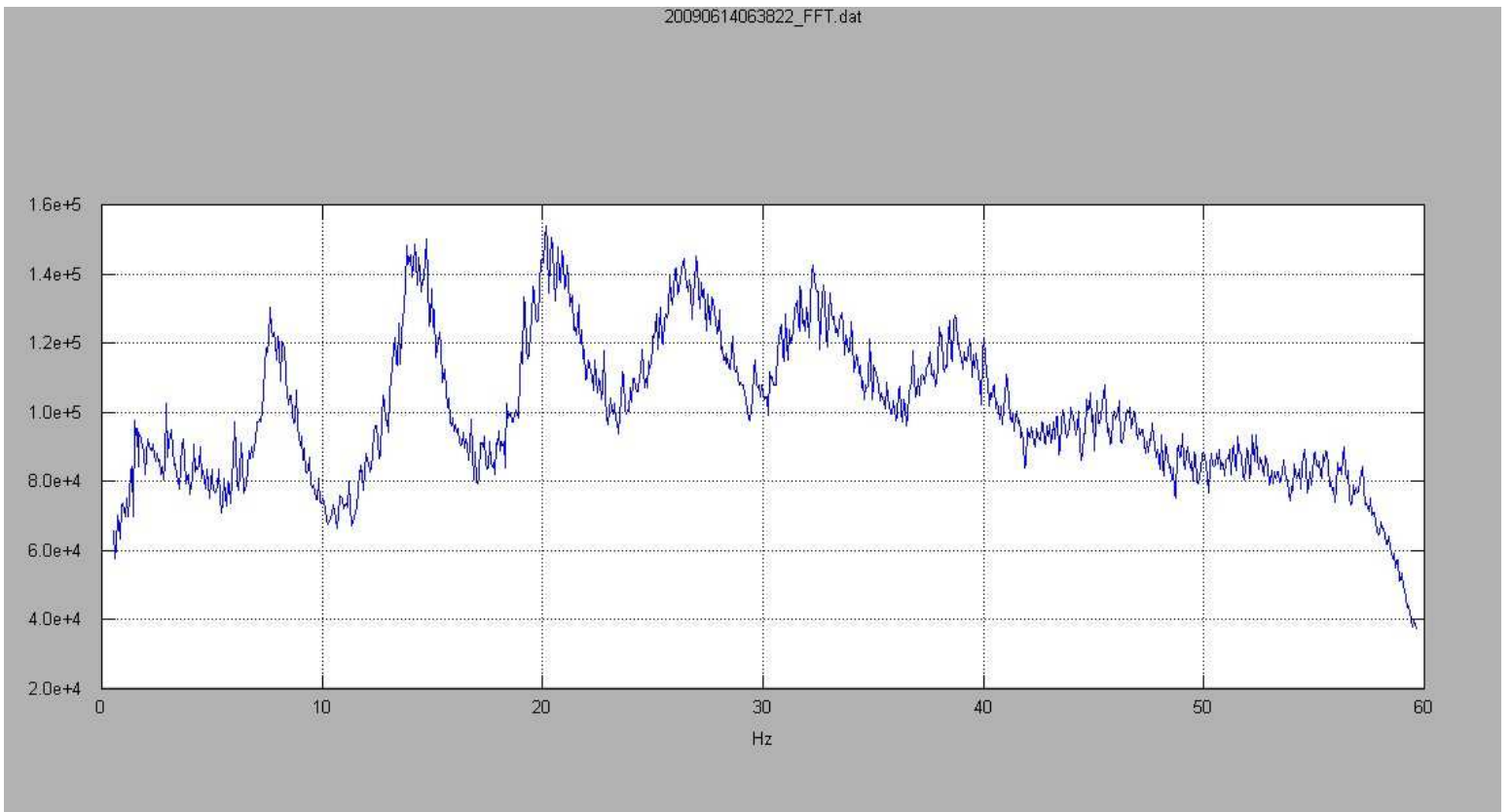
11/25/2008 Time period 05:00UTC To 10:00UTC



11/25/2008 Time Period 06:00UTC To 11:00UTC



Normal Schumann Resonances



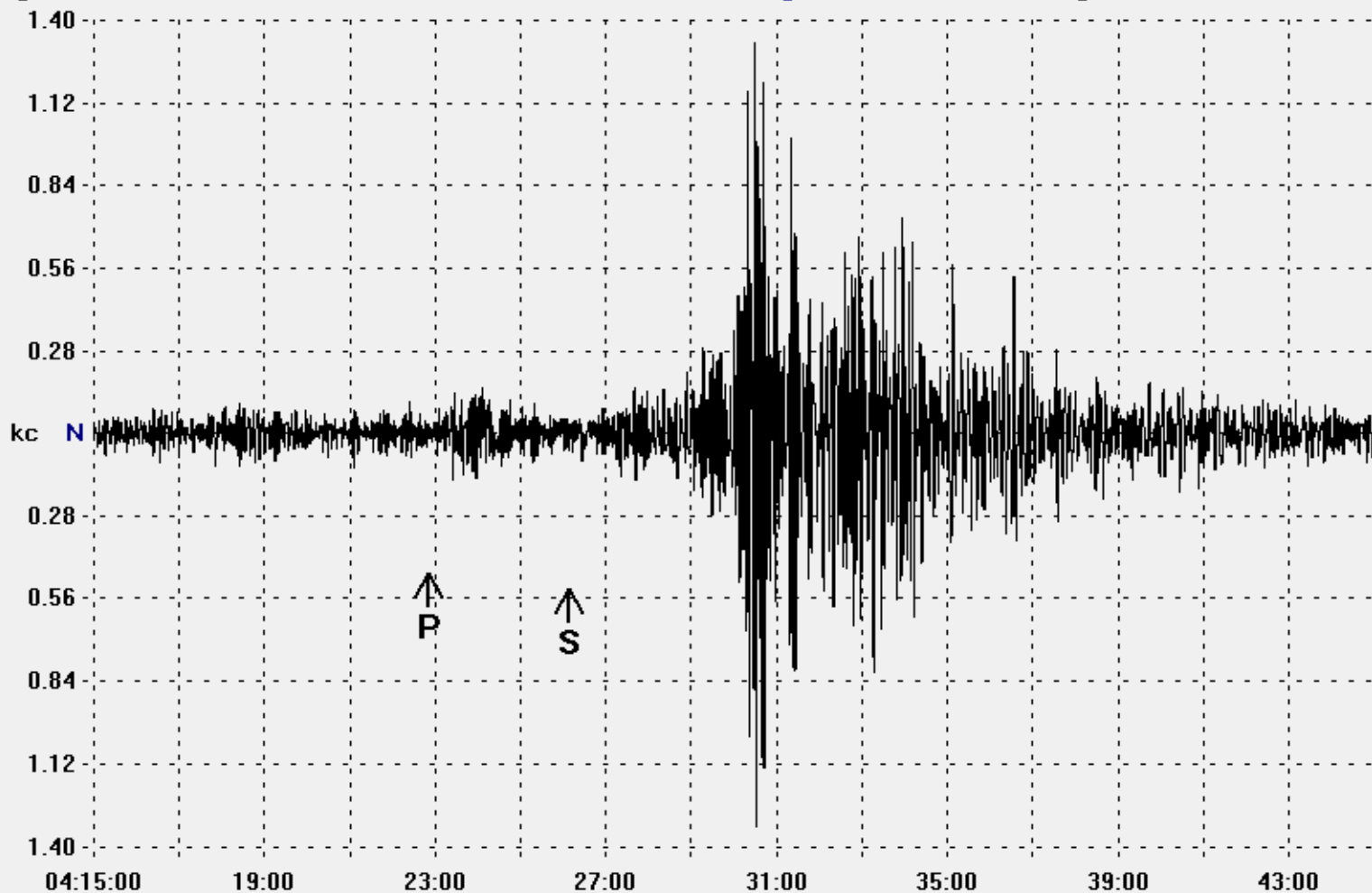
EQ 11/28/08
Mag 5.8
Depth 10km
Lat 40.34N
Long 126.98W



EQ 12/06/08
Mag 5.1
Depth 5km
Lat 34.81N
Long 116.42 W

My Location
Lat 33.34N
Long 112.11W
SR Anomaly 11/25/08

Start: 12/06/08 4:15:00 UTC Station: CORPUS CHRISTI TX 27.6839N 97.3786W Samples: 90100 SPS: 50
Comment: M5.1 1974km from CORPUS CHRISTI TX, Southern California, USA Max/Min: 1322/-1333 X: 30:02.0 Y: 1.4k
Event Time: 12/06 04:18:42.0 Lat/Long: 34.814N 116.421W Depth: 5km 3.1mi Mag: M5.1
Org: 4:18:42.0 P: 4:22:51.6 S: 4:26:07.7 Diff: 3:16.1min Dist: 17.751deg 1973.5km 1226.3mi Mag: MI?? JB: 5



Start: 11/28/08 13:41:31 UTC (L) Station: Redwood City, CA USA 37.497N 122.241W Samples: 60200 SPS: 200
Comment: M5.8 518km from Redwood City, CA USA, OFF COAST OF NORTHERN CALIFORNIA X: 5:00.0 Y: 8mm
LCNH - Max/Min: 2449/-2647 Peak: 7.94 mm/s**2 8.096ug
Event Time: 11/28 13:42:18.0 Lat/Long: 40.34N 126.98W Depth: 10km 6.2mi Mag: M5.8
Org: 13:42:18.0 P: 13:43:30.2 S: 13:44:25.2 Diff: 55.0sec Dist: 4.657deg 517.7km 321.7mi Mag: MI6.2 JB: 10

